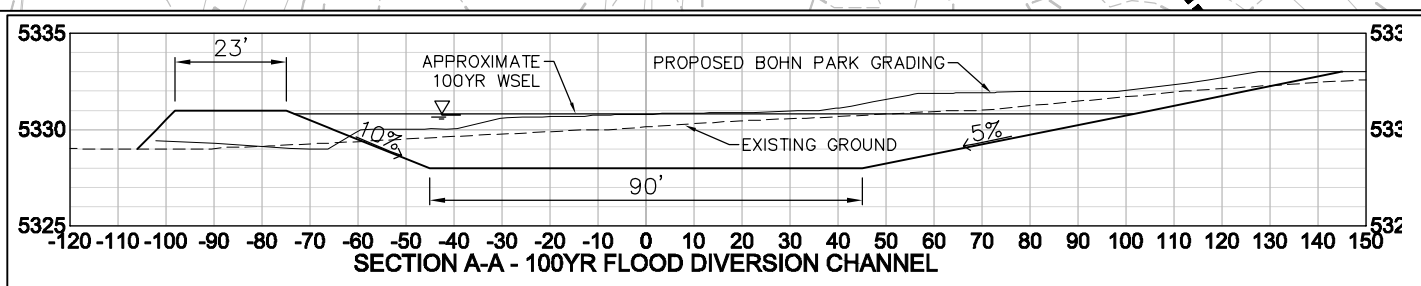
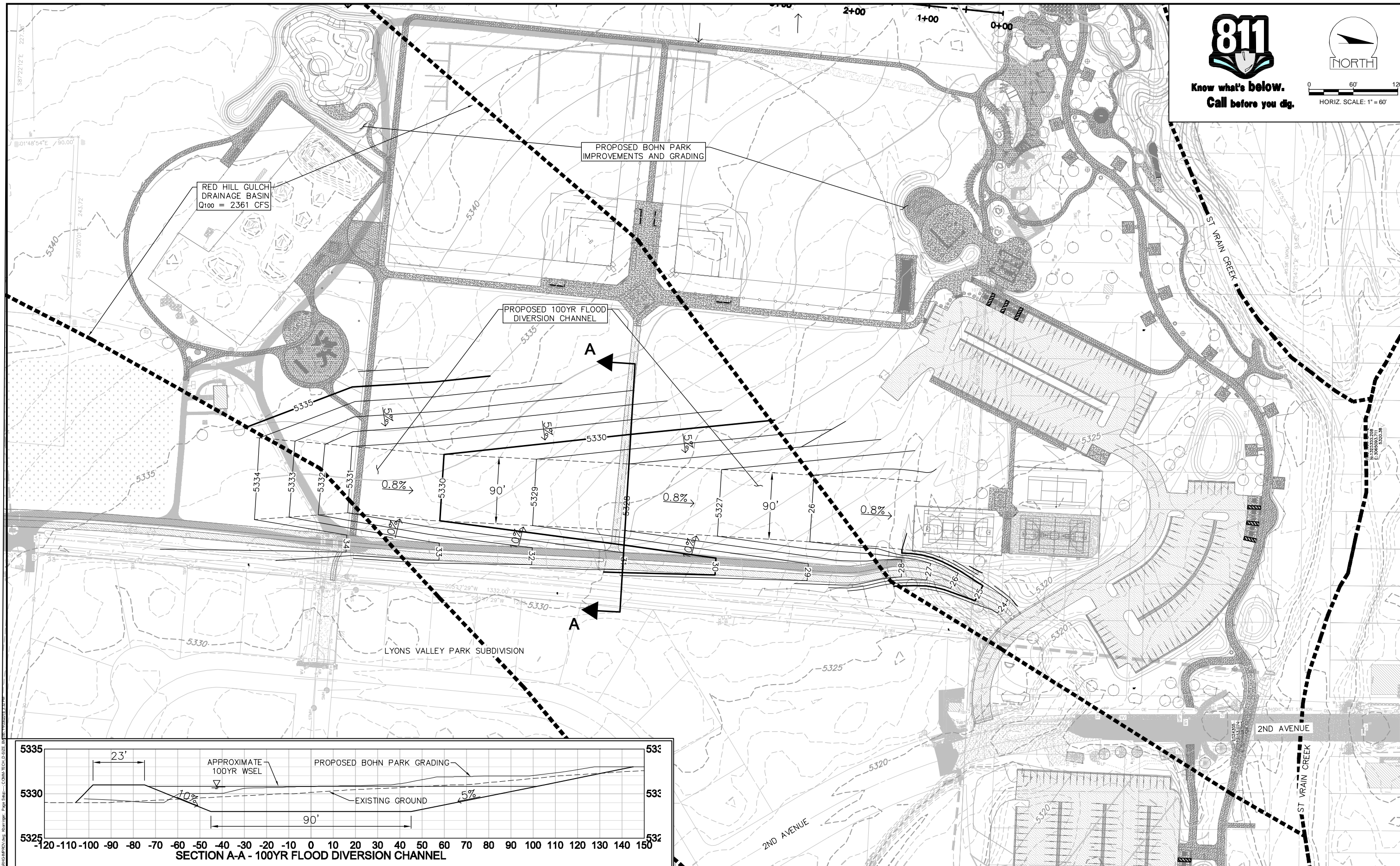




Know what's below.
Call before you dig.



0 60' 120'
HORIZ. SCALE: 1" = 60'



No.	DATE	REVISIONS	APPR.

PLAN	UTILITIES
DRAWN KDB	RESEARCHED
DESIGNED KDB	DRAWN
CHECKED TC	CHECKED

ICON
ENGINEERING, INC.
7000 S Yosemite Street, Suite 201, Centennial, CO 80102
Phone (303) 225-0402 / Fax (303) 225-1009

TOWN OF LYONS DRAINAGE MASTER PLAN
CONCEPTUAL DRAINAGEWAY IMPROVEMENTS - RED HILL GULCH
CHANNEL DIVERSION ON BOHN PARK PROPERTY

DATE
NOV 2016

SHEET
1

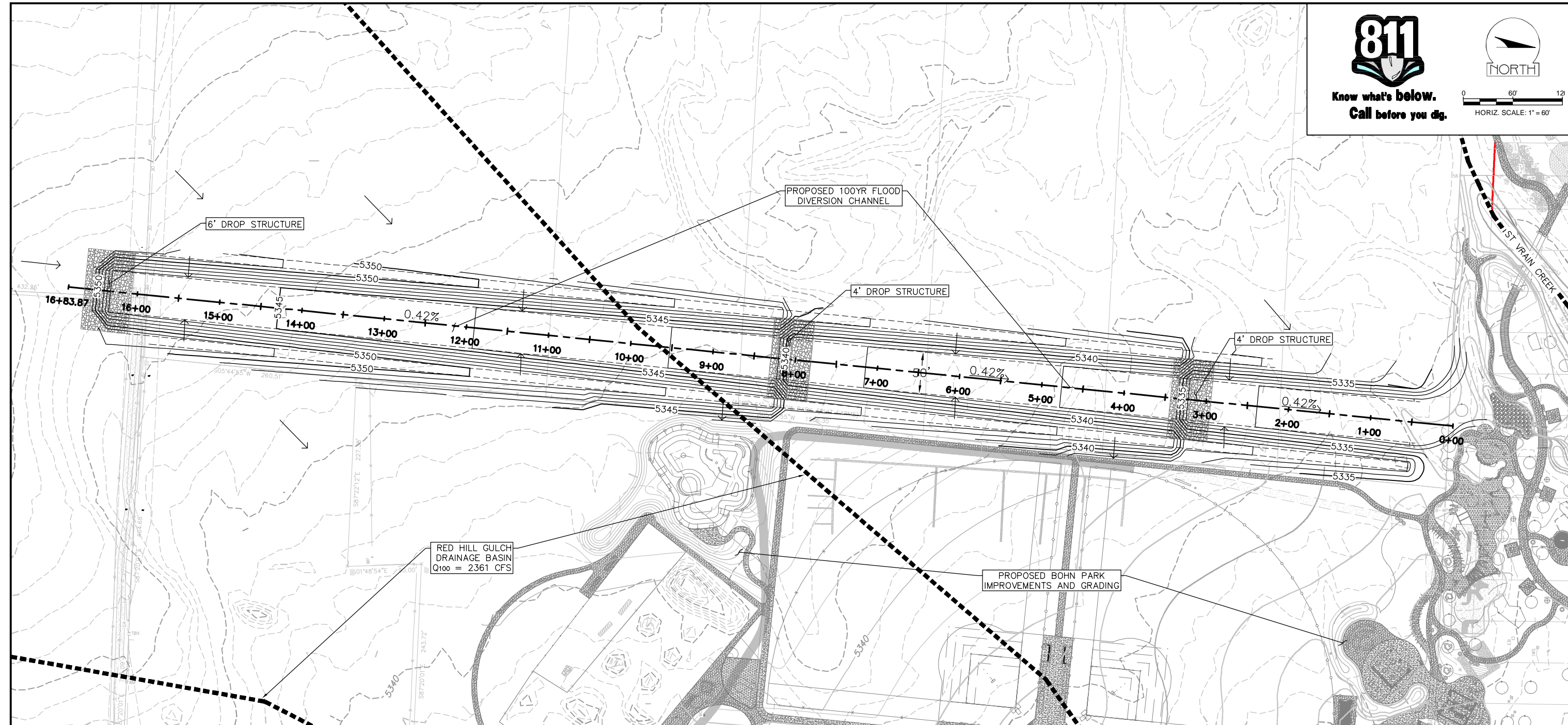
\\lib\al\cd\p\p\final\BLETDRMG\APR\DWG... Page 16 of 16 - COMA TECH D-502E



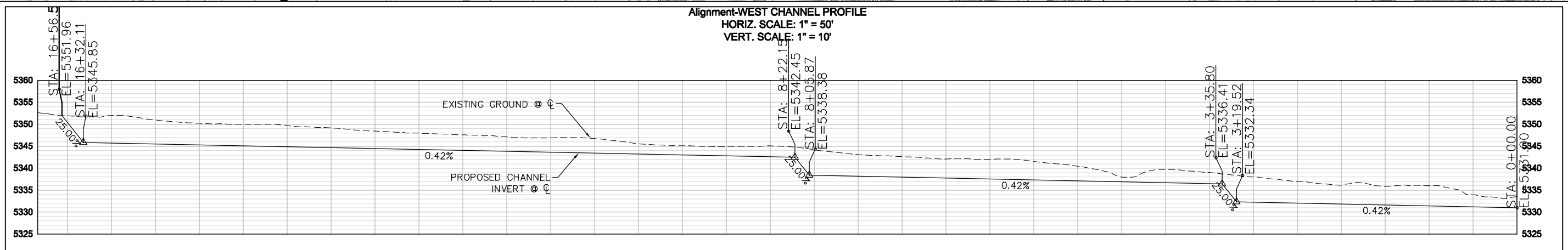
Know what's below.
Call before you dig.



0 60' 120'
HORIZ. SCALE: 1" = 60'



Alignment-WEST CHANNEL PROFILE
HORIZ. SCALE: 1" = 50'
VERT. SCALE: 1" = 10'



\\18014\02\p02\FINAL\BRETHERTON\DWG\Drawings - COMA TECH D-SEDE - RMW-11/20/2016 1:48 PM

No.	DATE	REVISIONS	APPR.

PLAN DRAWN KDB DESIGNED KDB CHECKED TC	UTILITIES RESEARCHED
	DRAWN CHECKED

ICON
ENGINEERING, INC.
7000 S Yosemite Street, Suite 201 | Centennial, CO 80102
Phone (303) 225-0802 / Fax (303) 225-1009

TOWN OF LYONS DRAINAGE MASTER PLAN
CONCEPTUAL DRAINAGEWAY IMPROVEMENTS - RED HILL GULCH
DIVERSION CHANNEL WEST OF BOHN PARK

ICON PROJECT No. 18-014-LYN-416

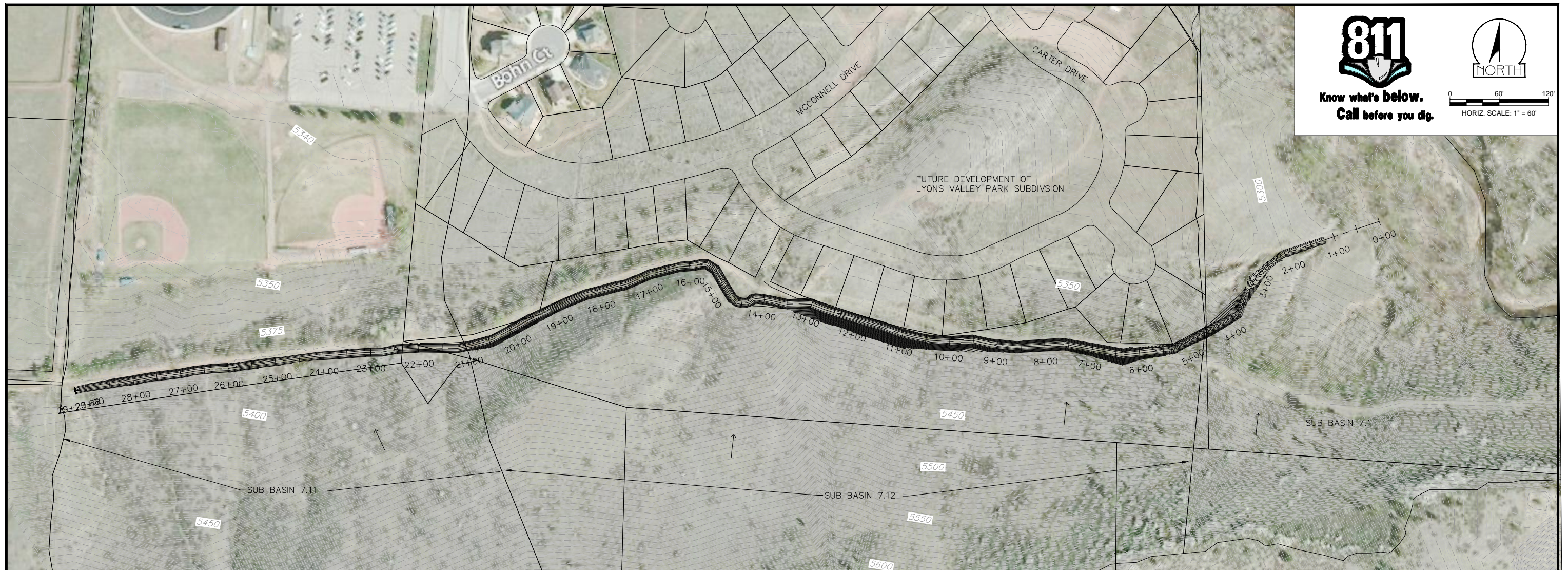
DATE NOV 2016
SHEET 1



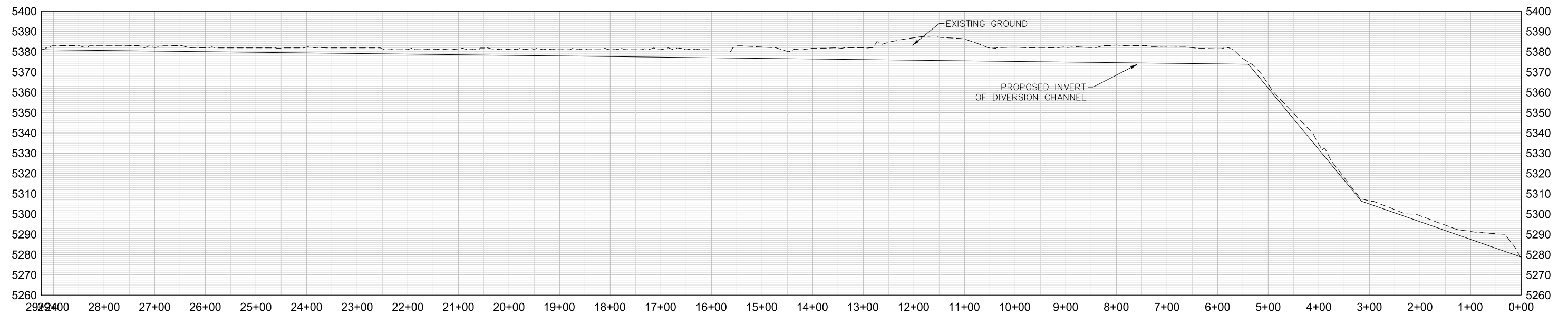
Know what's below.
Call before you dig.



0 60' 120'
HORIZ. SCALE: 1" = 60'



P-ALIGN-S-LEDGE-DITCH PROFILE
HORIZ. SCALE: 1" = 100'
VERT. SCALE: 1" = 25'



P:\16-014\16-014-415\16-014-415-SOUTH LEDGE DITCH DIVERSION\16-014-415-SOUTH LEDGE DITCH DIVERSION.dwg -- COMTECH US/E 12/10/2016 5:47 PM

<table border="1"> <tr><th>No.</th><th>DATE</th><th>REVISIONS</th></tr> <tr><td> </td><td> </td><td> </td></tr> <tr><td> </td><td> </td><td> </td></tr> </table>		No.	DATE	REVISIONS							<table border="1"> <tr><th>APPR.</th><th>TC</th></tr> <tr><td> </td><td> </td></tr> </table>		APPR.	TC			<table border="1"> <tr><th>PLAN</th><th>UTILITIES</th></tr> <tr><td>DRAWN</td><td>RESEARCHED</td></tr> <tr><td>KDB</td><td>DRAWN</td></tr> <tr><td>DESIGNED</td><td>CHECKED</td></tr> <tr><td>JD</td><td>CHECKED</td></tr> <tr><td>CHECKED</td><td> </td></tr> <tr><td>TC</td><td> </td></tr> </table>		PLAN	UTILITIES	DRAWN	RESEARCHED	KDB	DRAWN	DESIGNED	CHECKED	JD	CHECKED	CHECKED		TC		 7000 S. Yosemite Street, Suite 1001, Centennial, CO 80112 Phone: (303) 236-0802 / Fax: (303) 236-1019 WWW.ICONENG.COM		TOWN OF LYONS DRAINAGE MASTER PLAN CONCEPTUAL DRAINAGEWAY IMPROVEMENTS SOUTH LEDGE DITCH DIVERSION CHANNEL		DATE NOV 2016 SHEET 1	
No.	DATE	REVISIONS																																				
APPR.	TC																																					
PLAN	UTILITIES																																					
DRAWN	RESEARCHED																																					
KDB	DRAWN																																					
DESIGNED	CHECKED																																					
JD	CHECKED																																					
CHECKED																																						
TC																																						

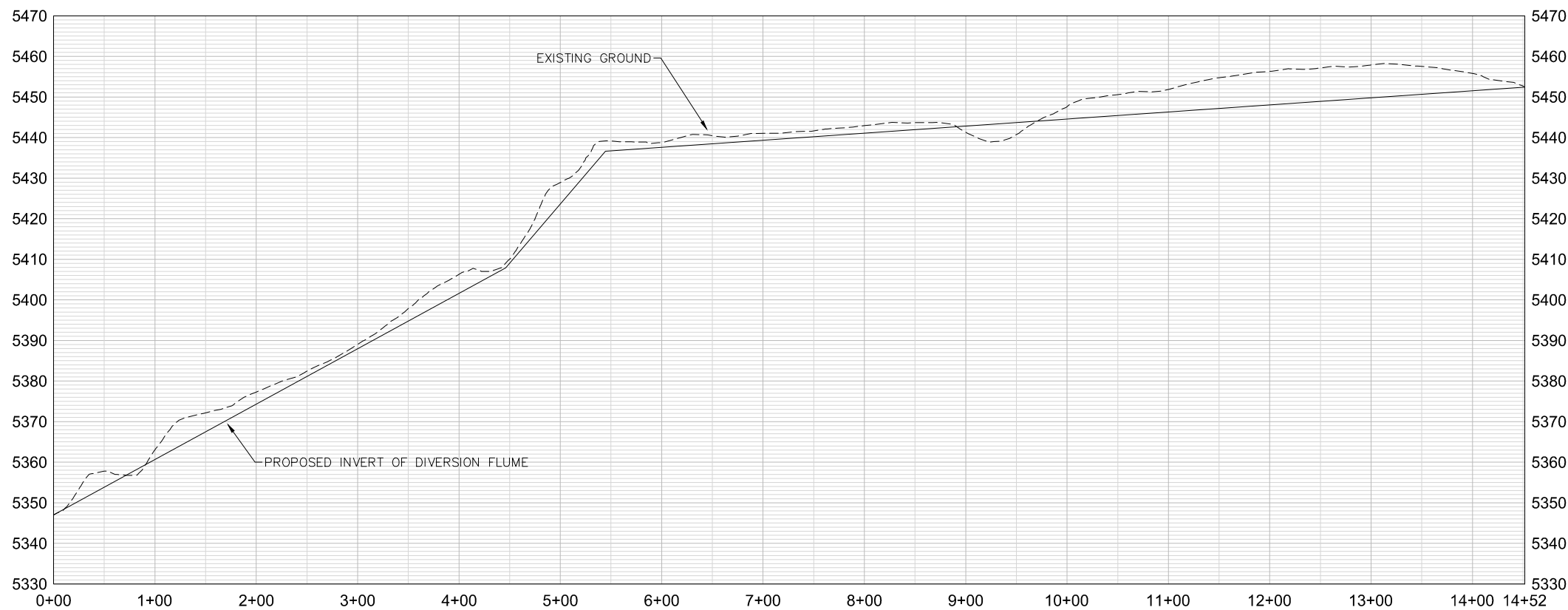


811
Know what's below.
Call before you dig.

NORTH

0 60' 120'
HORIZ. SCALE: 1" = 60'

Alignment - EWALD PROFILE
HORIZ. SCALE: 1" = 70'
VERT. SCALE: 1" = 18'



No.	DATE	REVISIONS	APPR.

PLAN DRAWN JD DESIGNED JD CHECKED TC	UTILITIES RESEARCHED DRAWN CHECKED
---	---

ICON
ENGINEERING, INC.
8100 South Platte Street, Suite 300, Centennial, CO 80112
Phone: (303) 234-0802 / Fax: (303) 234-1019
WWW.ICONENG.COM

TOWN OF LYONS DRAINAGE MASTER PLAN
CONCEPTUAL DRAINAGEWAY IMPROVEMENTS
EWALD DIVERSION CHANNEL

ICON PROJECT No. 16-014-LYN-416

DATE NOV 2016
SHEET 1



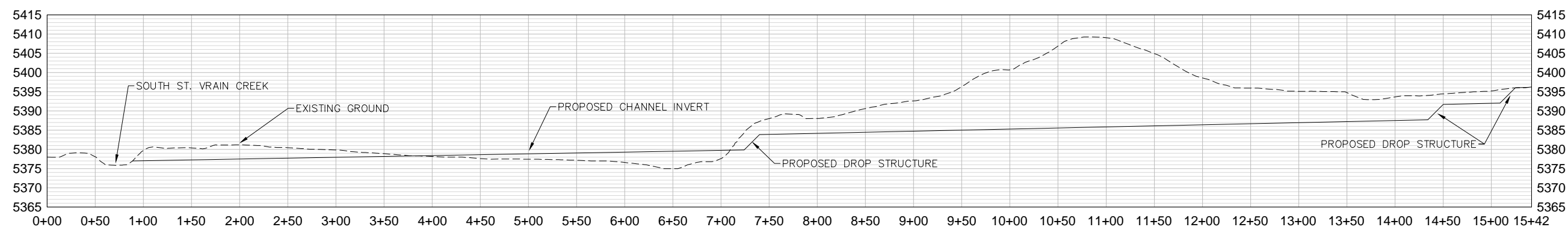
Know what's below.
Call before you dig.



0 60' 120'
HORIZ. SCALE: 1" = 60'



Alignment - Red Hill Gulch Cut-Off Channel PROFILE
HORIZ. SCALE: 1" = 50'
VERT. SCALE: 1" = 12'



No.	DATE	REVISIONS	APPR.

PLAN DRAWN JD DESIGNED JD CHECKED TC	UTILITIES RESEARCHED DRAWN CHECKED
---	---

ICON
ENGINEERING, INC.
8100 South Fikron Street, Suite 300, Centennial, CO 80112
Phone: (303) 228-0802 / Fax: (303) 228-1019
www.ICONENG.COM

TOWN OF LYONS DRAINAGE MASTER PLAN
CONCEPTUAL DRAINAGEWAY IMPROVEMENTS
RED HILL GULCH CUT-OFF CHANNEL

ICON PROJECT No. 18-014-LYN-415

DATE
NOV 2016

SHEET
1